

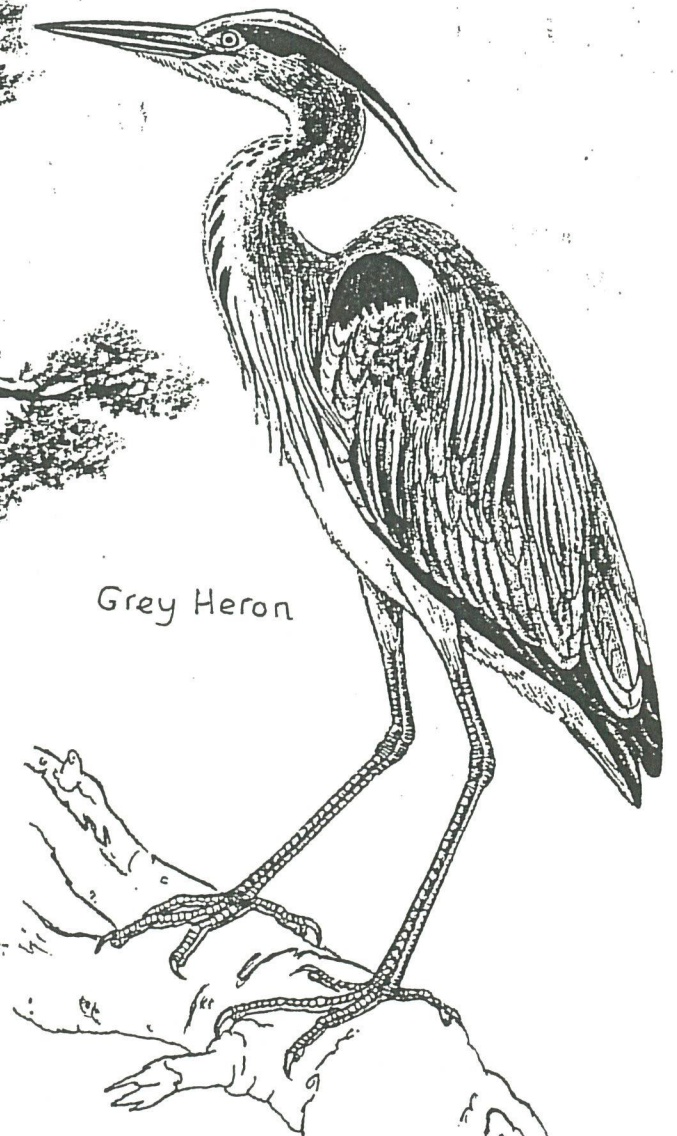
LONG EATON  
NATURAL HISTORY  
SOCIETY  
BULLETIN

No 54

SPRING  
2007



*Scots Pine*



*Grey Heron*

## CHAIRMAN'S FORWARD

This year sees the 30th anniversary of the formation of LENS and we are seeking suggestions as to how we might celebrate this occasion. One suggestion which came from the committee was to plant a tree on West Park in collaboration with the newly formed Friends of West Park. The actual time is the autumn of 2007, so any ideas would be welcome and it would also afford a publicity opportunity for LENS.

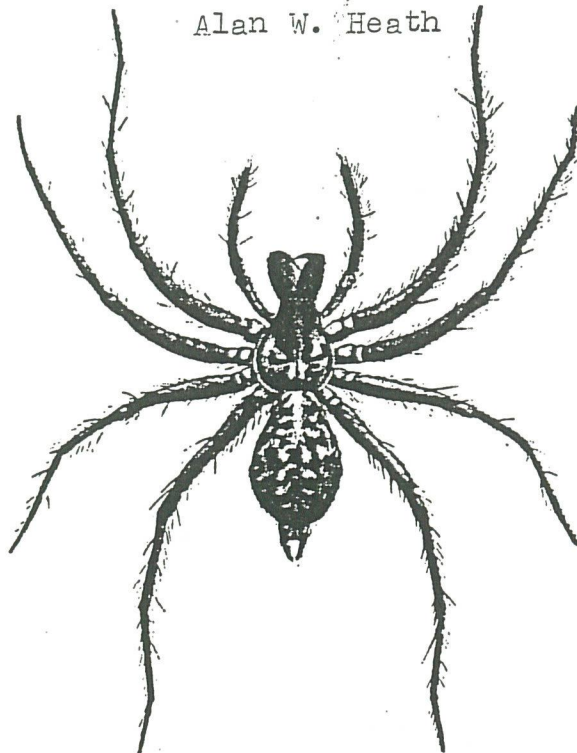
Committee decided to apply for a Lottery Grant to obtain a Digital Projector. There was strong debate as to whether we would ever actually use one as it was felt that most speakers who use digital projectors would prefer to bring their own. However, majority opinion was that we should go ahead and the necessary application forms have now been obtained. We also hope to extend the grant to include speaker's fees, room rent, advertising, etc.

Since our last bulletin, four members have had the misfortune to spend some time in hospital. We wish Max Bryce, John Blackburn, Derek Bates and Gwen Bates good health for the future.

Thanks are extended to all who contributed to the RSPB Big Garden Bird Survey as well as to our own annual garden bird records. Joan Breakwell has provided a comprehensive garden bird record from 2000 (see page 4 for her 2006 report) and this, along with an earlier record from Gwen Bates should provide an opportunity to study bird numbers locally over a number of years and which will be of scientific value.

We hope as many of you as possible will attend our Summer Outings and thank you for your continued support.

Alan W. Heath

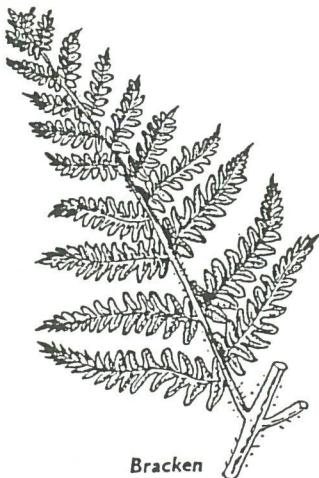


*Tegenaria atrica*  
The common large House Spider.

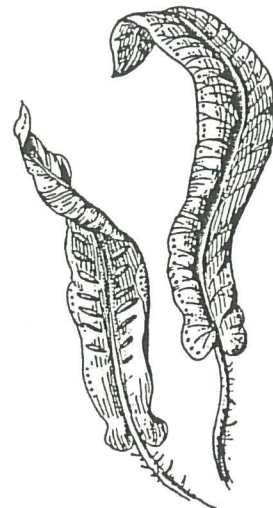


## MEMBERS R.S.P.B. BIG GARDEN BIRD WATCH RESULTS - 2007

BLACKBIRD	2	2	1
BLUE TIT	1	1	
CHAFFINCH		4	
COLLARED DOVE		1	6
DUNNOCK	1	2	
GREAT TIT		3	1
GREENFINCH		5	
GOLDFINCH		3	
HOUSE SPARROW		2	9
LONG-TAILED TIT		6	
MAGPIE	1	1	2
ROBIN	1	2	1
STARLING	1		6
WOOD PIGEON		2	
WREN		1	
CROW		1	
MOORHEN		1	
	Helen Knewstubb 9 Kingsley Crescent Sawley	John & Fay Blackburn 30 Quorndon Crescent Long Eaton	Alan Heath 6 Harlaxton Drive



Bracken



Hart's Tongue

	J	F	M	A	MyJ	Jy	A	S	O	N	D	
blue tit	3	2	2	2	3	2	2	2	4	3	3	4
robin	2	2	2	2	2	2	1	2	1	1	1	1
blackbird	4	7	4	3	3	3	3	7	9	4	3	5
house sparrow	12	14	16	7	8	9	21	21	16	24	11	12
starling	17	8	8	2	3	6	9	2	5	30+	30+	30+
dunnock	2	1	1	1	1	2	1	1	1	1	1	1
chaffinch	7	7	7	4	2	2	5	2	4	5	3	11
great tit	2	1	1	1	1	6	1	2	1	2	1	2
greenfinch	12	8	10	9	4	3	6	15	10	9	5	4
collared dove	3	7	5	5	5	3	7	9	9	12	14	8
coal tit	1		1	2		4						
longtailed tit	1		3									
goldfinch	4	2	4	2	2	2	2	1	1	2	4	4
crow	1	1	1		1	1	1	2	1	1	1	2
magpie												
mistle thrush				1								1
song thrush												1
sparrow hawk												1
wood pigeon	2	1	4	4	3	3	4	3	2	3	2	2
wren	1	1	1	1	1							1
bullfinch	1		1		1	2						
blackcap	2	2	2	1								
fieldfare											1	
redwing									1			

YEAR 2006

NAME GWEN BATES

ADDRESS 4 HARDY CLOSE  
LONG EATON

The figures are the highest number of each bird seen at any one time during the month.

## Garden Birds 2006

Bird	J	F	M	A	My	Jn	Jy	A	S	O	N	D
Blue tit	2	3	2	2	2	9	9	6	6	5	6	6
Robin	2	2	2	2	2	2	2	2	1	1	1	1
Blackbird	6	6	4	5	4	5	7	6	3	5	6	6
House sparrow	11	11	16	6	9	11	20	24	14	16	18	24
Starling	50	20	4	30	25	120	30	3	4	1	5	40
Dunnock	2	2	2	2	3	4	1	1	2	1	1	1
Chaffinch	3	4	3	4	4	3	3	3	6	1	3	12
Great tit	3	2	2	2	2	2	3	3	2	2	3	3
Greenfinch	7	4	8	6	7	6	7	7	12	2	4	10
Collared dove	3	5	3	4	3	4	3	3	2	2	2	2
Bullfinch	-	-	-	-	-	1	1	-	-	-	-	-
Coal tit	2	1	2	-	-	-	-	-	-	1	1	1
Crow	1	1	2	1	1	2	-	1	-	1	1	1
Goldcrest	-	1	-	-	-	-	-	-	-	-	-	-
Goldfinch	6	9	6	5	4	8	3	4	10	8	9	13
Gt spt woodpkr	-	1	-	-	-	-	-	-	-	-	0	-
Grey wagtail	-	-	-	-	-	-	-	-	-	1	-	1
Heron	-	0	0	0	-	-	-	-	-	-	-	-
Long tailed tit	2	2	2	2	4	3	5	8	7	3	6	10
Magpie	4	4	4	3	1	1	2	1	2	3	4	4
Mallard	-	2	-	2	2	3	-	-	-	-	-	-
Mrsh/willow tit	1	-	-	-	-	-	-	-	-	-	-	-
Mistle thrush	-	-	1	1	-	-	-	-	-	-	-	-
Pied wagtail	-	-	-	-	-	4	1	-	-	-	-	-
Redpoll	2	2	2	1	-	-	-	-	-	-	-	-
Song thrush	1	1	-	-	-	1	-	-	-	-	-	-
Sparrowhawk	-	-	1	-	-	-	-	1	-	1	-	-
Swallow	-	-	-	-	0	-	-	-	-	-	-	-
Wood pigeon	6	3	3	2	3	7	5	3	1	3	5	5
Wren	1	1	1	1	1	-	-	-	-	-	-	-

These birds were seen at 60 Wensleydale Road, Long Eaton by Joan & Keith Breakwell.  
The figures are the highest number of each species seen in the garden at any one time during the month.

0 denotes a bird that was seen, but didn't land in the garden.





## Barker's Pond/Our Garden (2-11-06 to 27-1-07)

Fay & John Blackburn

Greenfinch appear to have recovered from the mystery virus that so severely decimated their numbers during the early part of the year. Six were observed on feeders in the garden on 8th November in company with a flock of 50+ starlings. Since that date greenfinch have appeared on an almost daily basis together with goldfinch and chaffinch. Three pairs of the latter were present on 5th December. Two male bullfinch appeared on 30th December.

The 8th November was also notable for the arrival on Barker's pond of a pair of shoveller which remained until 22nd November. On 13th November they were joined for a few hours by a juvenile male which had departed by the following morning. The pair returned on 9th January (accompanied briefly by a further female on 20th January) and stayed until 22nd January when the first severe frost of the winter caused much of the pond to be covered in ice and the birds left to seek more favourable waters. A cormorant made sporadic fishing trips to the pond on 10th, 13th and 21st January.

The first winter sighting of tufted duck came with the arrival of a pair on 28th November, since which time they have been present on an almost daily basis. Occasionally only a solitary male has appeared but the usual complement has consisted of two male birds with an accompanying female. Odd variations included three males on 1st January and three males and an attendant female on 7th, 8th, 16th and 17th January. A pair of swans returned to the pond on 15th December and have remained to date. They have a voracious appetite for the mixed corn we feed daily both to them and the resident mallards, coots and moorhens.

A solitary male goosander was much in evidence on the pond on 21st January and a juvenile lesser black-back gull touched down briefly on 27th January.

A kingfisher flew across the garden on 25th and 27th December, the latter date being also noteworthy for the appearance of a marauding sparrow hawk. This predator had earlier made two visits to the garden on 26th November.

A song thrush was busy foraging on the large lawn on 2nd December and a grey wagtail made a brief but welcome appearance to the pool on 21st December, a first sighting of one of these attractive birds for over a year.

Sparrow numbers have shown a noticeable decline during the past year so it was reassuring to observe six in the garden on 23rd January.

A solitary buzzard was spotted circling high over the Sheet Stores industrial site on 27th January before disappearing in the direction of the River Trent towards Attenborough.

Marsh marigolds were noted in flower in the garden pool on 13th November.



FORBES HOLE, Long Eaton SUMMARY OF RECORDS - 2006 - Alan HEATH

<u>MAIN POND</u> -	<u>SMALL POND</u> ?
Ascellus	Alderfly larva
Bacillaria paradoxa	Ascellus
Bosmina	Bursaria
Caddis larva	Caddis larva
Ceratium	Ceriodaphnia
Ceriodaphnia	Coenagrion nymph
Chydorus	Corixa
Cladocera	Cyclops
Gloeon nymph	Cymbella ehrenbergii
Closterium attenuatum	Cymbella gastroides
Closterium concavum	Cypris
Coenagrion nymph	Daphnia hyalina
Cyclops	Daphnia obtusa (4 June only)
Cymbella ehrenbergii	Diaptomus
Cymbella gastroides	Diatoma
Daphnia hyalina	Draparnaldia
Dendrocoelum lacteum	Gammarus
Diaptomus	Hydracarina
Diatoma	Leech
Euglena	Loxophyllum
Eurycercus	Nitzschia sigmoidea
Fragellaria	Oscillatoria
Gammarus	Feashell
Helobdella stagnalis (Leech)	Penium
Hydra oligactis	Pinnularia
Keratella quadrata	Polycellis nigra
Lestes nymph	Rotifer sps.
Limnaea pereger	Simocephalus
Loxophyllum	Synedra
Mougeotia	Water Moss (Fontinalis antipyretica)
Nematodes	
Nitzschia sigmoidea	
Oscillatoria	
Penium	
Pinnularia	
Planorbis sp.	pH 7.5 - 7.8
Pleurosigma	Dissolved O <sub>2</sub> 0.8 - 7.0 ppm
Polycellis nigra	
Rotaria neptuna	
Rotifer sps.	
Scapheloberus	
Simocephalus	
Spirogyra	
Spirostomum	
Surirella constricta	
Synedra	
Synura	
Tribonema	
Vorticella	
pH 7.6 - 7.8	
Dissolved O <sub>2</sub> 2.8 - 11.7 ppm	
PERIOD - 26 January to 28 November 2006	



FOUND IN MAIN POND ONLY - FOUND IN SMALL POND ONLY †

Bacillaria paradoxa	Alderfly larva
Bosmina	Bursaria
Ceratium	Corixa
Chydorus	Daphnia obtusa (4 June only)
Cladocera	Draparnaldia
Closterium attenuatum	Hydracarina
Closterium concavum	Peashell
Dendrocoelum lacteum	Water Moss (Fontinalis antipyretica)
Euglena	
Eurycercus	
Fragellaria	
Helobdella stagnalis (Leech)	
Hydra oligactis	
Keratella quadrata	
Lestes nymph	
Limnaea pereger	
Mougeotia	
Nematodes	
Planorbis sp.	
Pleurosigma	
Rotaria neptuna	
Scapheloberus	
Spirogyra	
Spirostomum	
Surirella constricta	
Synura	
Tribonema	
Vorticella	

NOTES : Bacillaria paradoxa and Draparnaldia were new to the site  
 Daphnia obtusa in Small Pond on 4 June only  
 No Cypris found in Main Pond  
 No Daphnia in Small Pond 10 Feb and 2 Sept  
 No Daphnia in Main Pond after 31 March  
 Low dissolved oxygen on 2 Sept in both ponds

Number of Species in Main Pond - 49  
 Number of Species in Small Pond - 30  
 Number of Species for both ponds combined - 57

FORBES HOLE, Long Eaton - BIRD LIST 2006 - Alan HEATH

Blackbird  
 Blackcap  
 Blue Tit  
 Bullfinch  
 Chaffinch  
 Collared Dove  
 Common Tern  
 Coot (with young)  
 Goldfinch  
 Great Spotted Woodpecker  
 Great Tit  
 Greenfinch  
 Kingfisher  
 Magpie  
 Mallard  
 Missel Thrush  
 Moorhen  
 Robin  
 Sedge Warbler  
 Swallow  
 Willow Tit  
 Wood Pigeon  
 Wren

BUTTERFLIES :

Brimstone  
 Comma  
 Common Blue  
 Large White  
 Meadow Brown  
 Orange Tip  
 Peacock  
 Ringlet  
 Small Tortoiseshell

MOTHS :

Burnett Campion Moth  
 Cinnabar Moth and pupa  
 Mother Shipton Moth  
 Plume Moth  
 Yellowshell Moth

INSECTA :

7-spot Ladybird  
 Shield Bug

PLANTS ;

Coltsfoot in flower 10 Feb  
 Meadow Cranesbill

DRAGONFLYS - with David Goddard

Azure Damselfly  
 Banded Demoiselle  
 Blacktailed Skimmer  
 Bluetailed Damselfly  
 Common Blue Damselfly  
 4-spot Chaser  
 Red-eyed Damselfly

FUNGI :

Stinkhorn - 17 June  
 Jew's ear fungus - 28 Nov



WEATHER SUMMARY - 2006 - Alan HEATH

PREVAILING WIND	- WEST
LEAST WIND	- SOUTH-EAST
WARMEST DAY	- 19th July - 94° F
COLDEST DAY	- 3rd March - 20° F
WETTEST DAY	- 22nd July - 22.2mm
WETTEST MONTH	- August followed closely by October
DRIEST MONTH	- June
DAYS WITH OVER AN INCH OF RAIN IN 24 HRS.	none
TOTAL THUNDERSTORMS	- 5
TOTAL RAIN	- 22.61 ins (574.1 mm) = 0.43 ins per week
TOTAL DRY DAYS + NIGHTS	- 473
TOTAL WET DAYS + NIGHTS	- 257
TOTAL SNOW	- 1/4 inch
DAYS WITH NEW SNOW ON THE GROUND	- 3
TOTAL FOG	- 5
FOG ALL DAY	- 1
BAROMETER - Maximum	- 30.95 on 21st December
Minimum	- 28.85 on 23rd November
STRONG WINDS/GALES	- 5 - 30 March, 19 May, 19 Nov 7 Dec and 29 Dec
AVERAGE MAXIMUM TEMPERATURE	- 70.0° F
AVERAGE MINIMUM TEMPERATURE	- 35.3° F
DAYS WITH TEMPERATURES OF 90° F OR MORE	- 4 - all in July
DAYS WITH TEMPERATURES OF 80° F OR MORE	- 32 - May 1, June 8, July 20, Aug 1, Sep 2
DAYS WITH TEMPERATURES OF 70° F OR MORE	- 94 - May 7, June 21, July 31; Aug 15, Sep 20
DAYS WITH TEMPERATURES OF 32° F OR LESS	- 33 - Jan 6, Feb 7, Mar 9, Apr 2, Nov 4, Dec 4

NOTE : RAINFALL approximately 2 inches below average and very similar to previous year.

TEMPERATURE - Warmest July since my records began and a very mild autumn.





## WIND - 2006

	N	NE	E	SE	S	SW	W	NW	TOTAL
Jan	2	5	5	-	5	3	3	2	25
Feb	3	8	2	-	-	4	4	4	25
Mar	1	4	6	1	3	7	10	4	36
Apr	5	2	-	-	2	4	12	7	32
May	2	3	2	1	7	4	9	4	32
Jun	2	2	-	-	5	2	5	1	17
Jul	-	-	2	1	5	7	8	1	24
Aug	8	-	-	-	1	4	6	11	30
Sep	2	-	1	4	6	8	7	2	30
Oct	-	-	2	3	8	8	11	5	37
Nov	1	-	-	-	4	8	13	2	28
Dec	1	-	-	-	5	9	8	3	26
<b>TOTAL</b>	<b>27</b>	<b>24</b>	<b>20</b>	<b>10</b>	<b>51</b>	<b>68</b>	<b>96</b>	<b>46</b>	<b>342</b>



**Short-eared Owl**  
*Asio flammeus*

MONTHLY SUMMARY OF WEATHER IN LONG EATON IN 2006

- January A mainly dry month with a lot of cloud. Dominance of East and North East wind. Driest month of the year.
- February Cloudy for the whole of the first week. Wetter towards the end of the month. Snow on two days
- March A cold month but warmer in the last week. Coldest day of the year on the 3rd.
- April A rather wet month but drier in last week.
- May A wet month. Some warm days, mainly in the first half of the month
- June A very warm month. Eight days with temperatures of 80°F or more. Driest month of the year. Very windy on the 20th, 21st., and 22nd.
- July A very warm month. Temperatures of 80°F or more on 20 days of which four were 90°F or more. Warmest day of the year on the 19th. Two thunderstorms on the 22nd produced nearly an inch of rain. Noctilucent clouds seen on the evening of the 14th.
- August A rather wet month with a dominance of North and North-West wind. Wettest month of the year, but despite this the rainfall was 2.4 inches below average up to this time.
- September A fairly wet month with 20 days with temperatures of 70°F or more and two days over 80°F. Wind mainly South and West.
- October A wet month, especially mid-month.
- November A mild month for the time of year. Rather wet in middle of month. Very windy on the 19th.
- December Another wet month. Fog on three days but strong wind on the 7th and 29th. Highest barometer reading for the year on the 21st and 22nd and Barometer very low on the 7th.