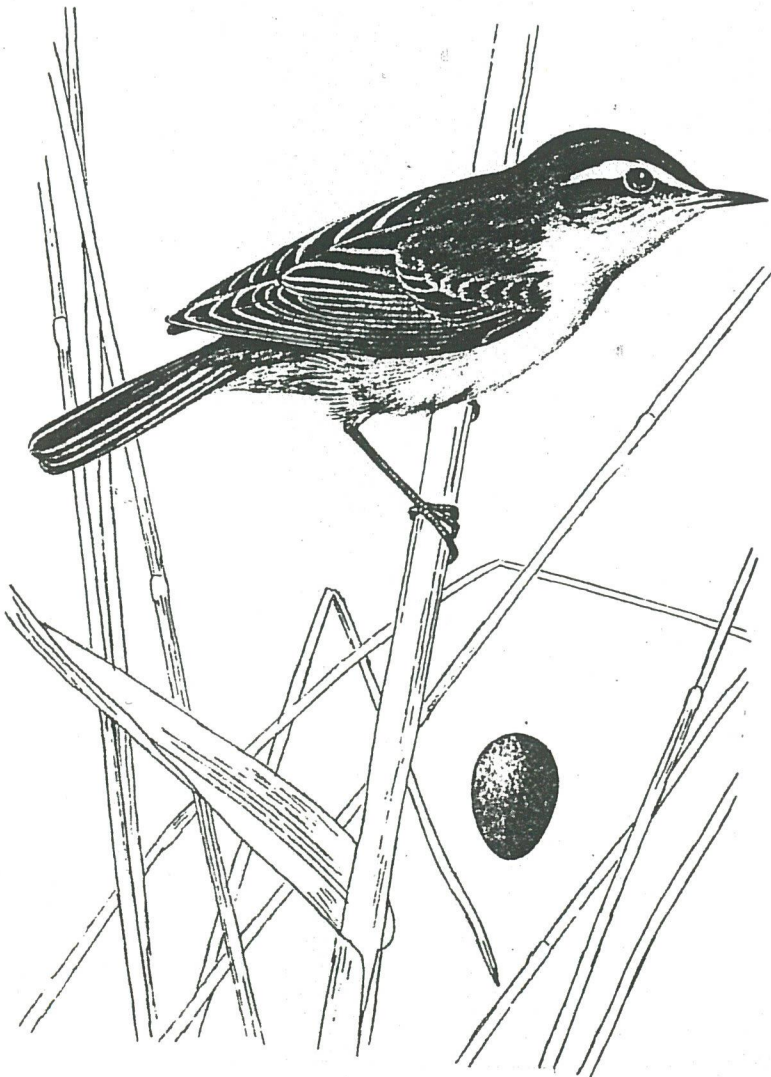


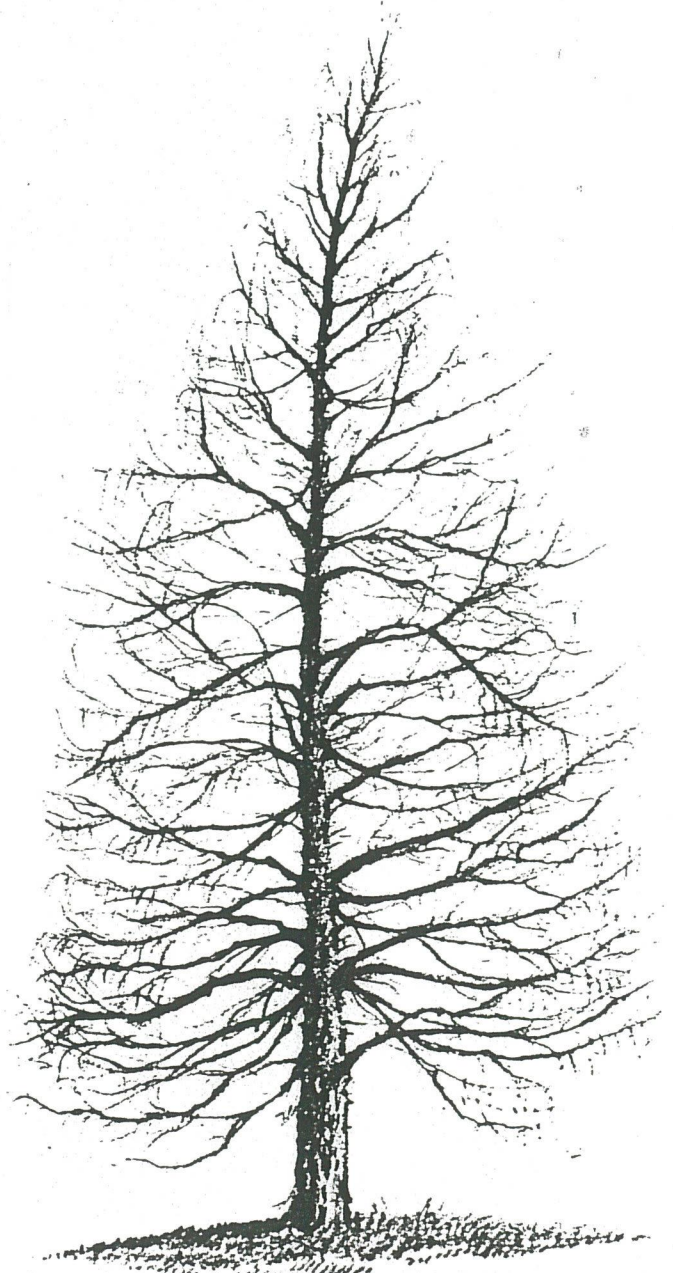
LONG EATON
NATURAL HISTORY
SOCIETY
BULLETIN

No. 55

WINTER 2007



Sedge Warbler
Acrocephalus schoenobaenus



Larch

CHAIRMAN'S FORWARD

The year has been another success with two events deserving of special mention. We were fortunate to receive a Lottery Award of £ 3579 which is to be used to purchase a digital projector as well as funding the rent of our venue, speakers fees and expenses and also publications etc.

The second is that this year sees our 30th Anniversary which was celebrated at the AGM with a cake. Later in the year a tree is to be planted in West Park by permission of Erewash Borough Council to commemorate the 30 years of LENS.

A press release for both events will help to publisise LENS.

Collaboration with Groundwork and Friends of Forbes Hole has continued and society details and records continue to appear in our Bulletin.

LENS put on a display at the INSECT SHOW at Broomfield College on Saturday 3rd November 2007. Max Bryce exhibited Mosquitoes and Marion had numerous insect cards on show. Alan Heath put on a display of pond life with a microscope and this was in collaboration with Dr. David Gibbons. Considerable interest was shown in these at a well attended event.

David Pinney and Alan Heath joined with Friends of Forbes Hole and Groundwork to rake hay at Forbes Hole Nature Reserve on the 25th October 2007.



Greater Stitchwort



Ramsons



Wood Sorrel

LONG EATON NATURAL HISTORY SOCIETY A.G.M. - 5th November 2007

The AGM was combined with the 30th Anniversary celebration of LENS. The following Officers and Committee were elected -

| OFFICE | ELECTED | PROPOSED BY | SECONDED BY |
|-------------------------------|-------------------------------|-----------------|-----------------|
| CHAIRMAN | Alan Heath | June Crosby | Helen Knewstubb |
| VICE-CHAIRMAN | John Blackburn | Brian Hobby | David Pinney |
| SECRETARY | Marion Bryce | Gillian Hallam | Dennis Truman |
| MEETINGS SECRETARY | John & Fay Blackburn | Helen Knewstubb | Jean Jones |
| TREASURER | Helen Knewstubb | David Pinney | June Crosby |
| AUDITOR | Mandy Bryce | Alan Heath | John Blackburn |
| BULLETIN EDITOR & RECORDER | Alan Heath | Gwen Bates | June Crosby |
| COMMITTEE | Anne Haynes John Haynes | | |
| CATERERS | Anne Haynes and Dorothy Banks | | |

MATTERS ARISING : -

1. Questionnaire - It was decided that a survey of the interests of members be carried out in order to assist in selecting speakers for future meetings. A possible change of meeting night was discussed and the questionnaire asks for each member to state their preference. The detached sheet is included at the end of this bulletin.
2. Membership Cards - Marion has produced a membership card which was distributed to members present at the meeting and will serve to be a receipt for each annual subscription.
3. Membership - It was agreed that we need more members and a number of ideas were put to the meeting. David Pinney stressed the importance of the 'Personal approach'
4. MEETINGS - In view of rising costs of the venue, cost of speakers etc., it was proposed that we consider monthly meetings and on a regular time, say first Monday of the month. Decision on this will be made later.
5. Programmes - Programmes of other societies and also the Wildlife Trusts should be made available so that members be made aware of these. Invite other societies to let us know of their programme of events.
6. Press Reports - Gillian Hallam suggested we report to areas outside Long Eaton, i.e. Beeston

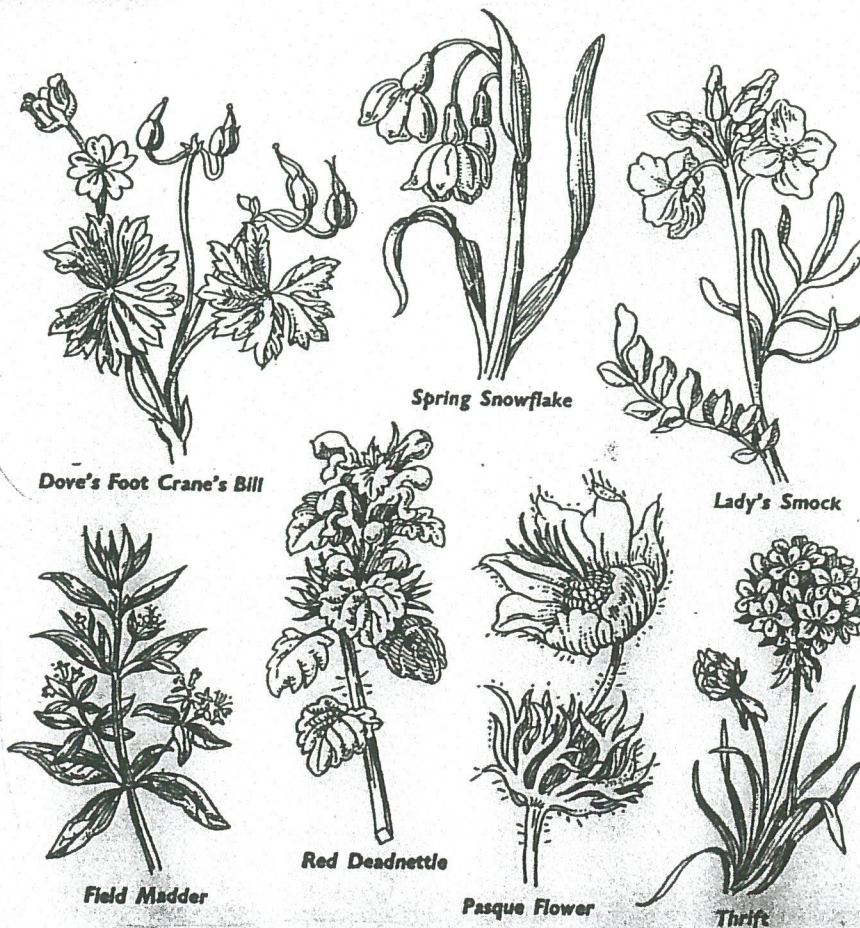
7. Recording - Marion Bryce spoke about the Mammal Survey to which members were invited to note all mammals seen both common and rare. John Blackburn spoke about the BTO bird survey in which anyone would record birds seen within a particular tetrad. Details of this can be obtained from John and records are sent to David Budworth at 01283 215188. The importance of recording cannot be over stressed.
8. Vote of Thanks - David proposed a vote of thanks to the officers and committee for their work throughout the year.

30th ANNIVERSARY CELEBRATION -

Following the AGM members enjoyed a cake made specially for the occasion and which featured a Bee Orchid. Photographs were taken of the cutting of the cake.

During this time, Marion Bryce demonstrated the Digital Projector bought with Lottery funding and members were impressed with its performance. Photographs were shown of society events, wildlife and also photographs of David Pinney's visit to Kenya.

Max Bryce brought along an exhibit of Mosquitoes which he had used at the Insect Show at Broomfield College but there was insufficient time to fully demonstrate this.



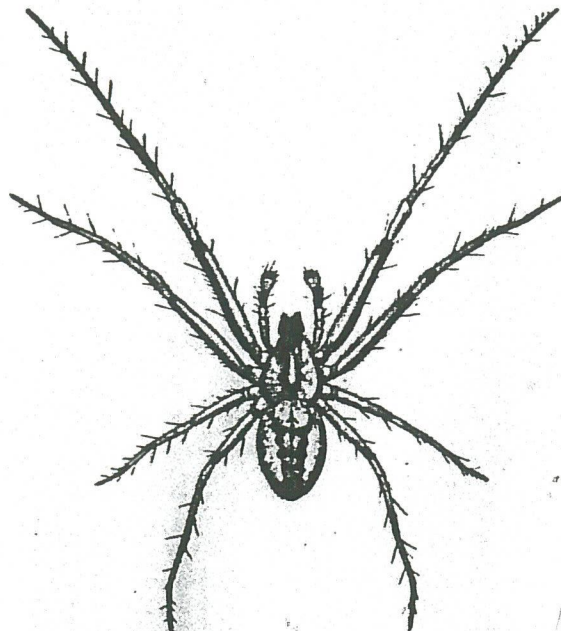
RECENT WILDLIFE SIGHTINGS -

| | |
|--|------------------------------|
| Elephanthawk Moth Caterpillar - | Alan Heath |
| Green Dagger, Poplar Hawk, Vapourer and Black Archers | Marion Bryce |
| Green Woodpecker - Trent College | Keith Breakwell |
| Two Barn Owls - Trent Meadows | |
| Cormorant - Long Eaton Canal | |
| Cormorants - frequently seen passing over Manor Farm Open Space | Alan Heath |
| Harlequin Ladybird - Risley | Marion Bryce |
| Sparrowhawk - | June Crosby |
| Goldfinch - | Jean Jones and Gwen Bates |
| Green Woodpecker - | Jean Jones |
| Starlings - many seen - Breaston | June Crosby |
| Very few visiting garden | Alan Heath |

LOCAL MAMMALS - Alan Heath

Regular visitors include Fox, Grey Squirrel, Field Mouse
Bats (? Pipistrelle) seen and detected on Bat Recorder
during the summer months.

6 Harlaxton Drive, Long Eaton



SPIDER *Meta segmentata*
One of the commonest British Argiopidae.

WILDLIFE SURVEY - 60 Wensleydale Rd., Long Eaton

SITE - Wildlife garden about 12 feet wide and 50 feet long with the Golden Brook running down the length.

WATER - Least Duckweed, Lesser Duckweed and white water lily
Numerous white Caddis flies flying close over the water.
See list of water sample

WATERSIDE - False Fox Sedge, Remote Sedge, Great Hairy Willowherb, Meadowsweet, Marsh Foxtail Grass, Celery leaved Buttercup, Yellow Iris and Bulrush

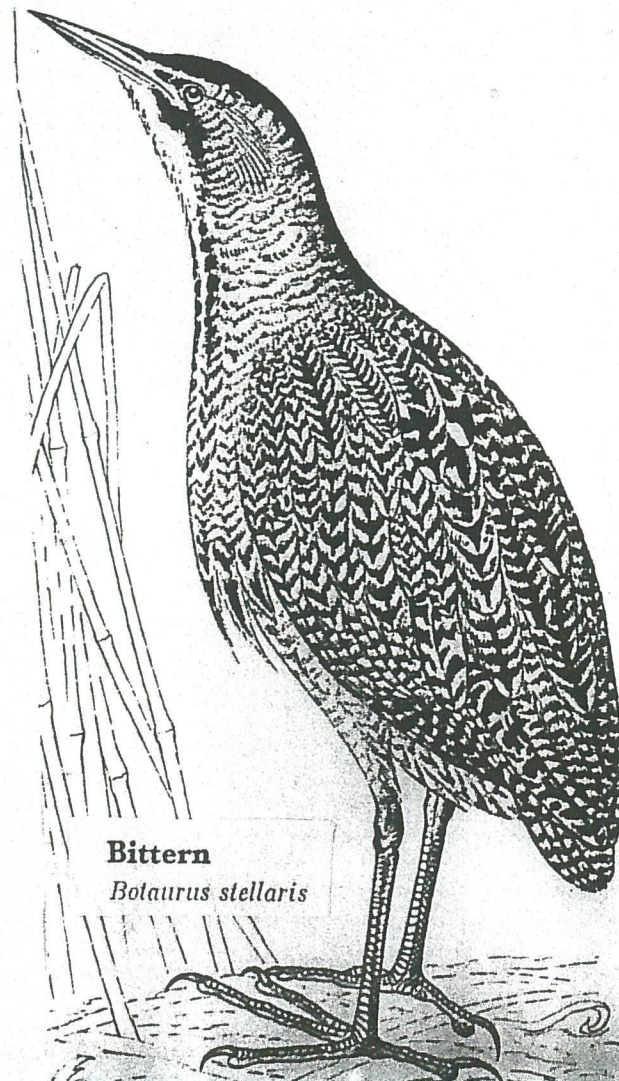
See List of Species - p. 6, 7, and 8

The owners have recorded 65 different types of bird throughout the years. A total of 65 plant species is an indication of the biodiversity that had been achieved in a small wildlife garden.

Marion Bryce and Alan Heath

NOTTINGHAM CANAL - LENS visit on 13th August 2007

Goat's Rue, Blue-tailed Damselfly, Red-eye Damselfly, Toadflax, Common Ragwort, Tufted Vetch, Hop Trefoil, Amphibious Bistort, White Deadnettle, Hogweed, Comfrey, Dyer's Rocket, BristleynOxtonge (Rare), Prickly Lettuce, Reed Sweetgrass, Bush Vetch, Gypsy Wort, Mallow



60 Wensleydale Road Long Eaton

Dates 9/7/2007

Survey Marion Bryce

Ref. No Common Name Latin Name Type

| | | | |
|-----|------------------------|-------------------------------------|-----------------|
| 42 | Fern, male agg | <i>Dryopteris filix mas</i> agg 664 | Fern |
| 606 | Aucuba | <i>Aucuba japonica</i> | Flowering plant |
| 607 | Alder grey | <i>Alnus incana</i> | Flowering plant |
| 64 | Ash | <i>Fraxinus excelsior</i> 841 | Flowering plant |
| 68 | Avens, Wood | <i>Geum urbanum</i> 925 | Flowering plant |
| 81 | Bindweed, Hedge | <i>Calystegia sepium</i> ss | Flowering plant |
| 90 | Bitter-cress, Hairy | <i>Cardamine hirsuta</i> | Flowering plant |
| 97 | Bramble [agg] | <i>Rubus fruticosus</i> 1728 | Flowering plant |
| 101 | Bryony, White | <i>Bryonia dioica</i> 276 | Flowering plant |
| 103 | Buddleia | <i>Buddleia davidii</i> | Flowering plant |
| 106 | Bulrush or Reedmace | <i>Typha latifolia</i> 2111 | Flowering plant |
| 120 | Buttercup, Celery lvd | <i>Ranunculus scleratus</i> 1663 | Flowering plant |
| 121 | Buttercup, Creeping | <i>Ranunculus repens</i> 1660 | Flowering plant |
| 131 | Celandine, Lesser | <i>Ranunculus ficaria</i> 1649 | Flowering plant |
| 141 | Cleavers or Goosegrass | <i>Galium aparine</i> 873 | Flowering plant |
| 142 | Clover, Red | <i>Trifolium pratense</i> 2091 | Flowering plant |
| 143 | Clover, White | <i>Trifolium repens</i> 2092 | Flowering plant |
| 151 | Cotoneaster pectinate | <i>Cotoneaster pectinata</i> | Flowering plant |
| 154 | Cowslip | <i>Primula veris</i> 1605 | Flowering plant |
| 160 | Creeping-Jenny | <i>Lysimachia nummularia</i> | Flowering plant |
| 178 | Dock, Broad-leaved | <i>Rumex obtusifolius</i> 1748 | Flowering plant |
| 180 | Dock, Curled [agg] | <i>Rumex crispus</i> 1742 | Flowering plant |
| 182 | Dock, Wood | <i>Rumex sanguineus</i> 1753 | Flowering plant |
| 187 | Duckweed, Common | <i>Lemna minor</i> 1126 | Flowering plant |
| 619 | Duckweed least | <i>Lemna minuta</i> | Flowering plant |
| 189 | Elder | <i>Sambucus nigra</i> 1815 | Flowering plant |
| 211 | Forget-me-not, Field | <i>Myosotis arvensis</i> 1317 | Flowering plant |
| 239 | Hawthorn | <i>Crataegus monogyna</i> 569 | Flowering plant |
| 240 | Hawthorn, red flowered | <i>Crataegus laevigata</i> | Flowering plant |
| 249 | Herb Robert | <i>Geranium robertianum</i> 918 | Flowering plant |
| 303 | Mustard, Garlic | <i>Alliaria petiolata</i> 64 | Flowering plant |
| 260 | Iris, Yellow | <i>Iris pseudacorus</i> 1038 | Flowering plant |
| 261 | Ivy | <i>Hedera helix</i> 952 | Flowering plant |
| 265 | Knotgrass[agg] | <i>Polygonum aviculare</i> ag1522 | Flowering plant |
| 266 | Knotweed, Japanese | <i>Fallopia japonica</i> 1528 | Flowering plant |
| 285 | Maple, Norwegian | <i>Acer platanoides</i> | Flowering plant |
| 291 | Meadowsweet | <i>Filipendula ulmaria</i> 833 | Flowering plant |
| 305 | Nettle, Common | <i>Urtica dioica</i> 2126 | Flowering plant |
| 326 | Periwinkle | <i>Vinca major</i> | Flowering plant |
| 620 | Firethorn | <i>Pyracanthus</i> spp | Flowering plant |
| 354 | Ragwort, Common | <i>Senecio jacobaea</i> 1899 | Flowering plant |
| 409 | Spurge, petty | <i>Euphorbia peplus</i> | Flowering plant |
| 429 | Teasel, Wild | <i>Dipsacus fullonum</i> 6461 | Flowering plant |
| 436 | Thistle, Spear | <i>Cirsium vulgare</i> 522 | Flowering plant |
| 438 | Toadflax, Common | <i>Linaria vulgaris</i> 1164 | Flowering plant |

| | | | |
|-----|-------------------------|----------------------------------|-----------------|
| 448 | Vetch, Tufted | <i>Vicia cracca</i> 2189 | Flowering plant |
| 621 | Willowherb American | <i>Epilobium ciliatum</i> | Flowering plant |
| 477 | Willow-herb, Gt hairy | <i>Epilobium hirsutum</i> | Flowering plant |
| 486 | Woundwort, Hedge | <i>Stachys sylvatica</i> 2005 | Flowering plant |
| 622 | Water lily white | <i>Nymphaea alba ssp alba</i> | Flowering plant |
| 624 | Bistort common | <i>Persicaria bistorta</i> | Flowering plant |
| 625 | Weigela | <i>Weigela florida</i> | Flowering plant |
| 626 | Thrift | <i>Armeria maritima</i> | Flowering plant |
| 632 | Rose of Sharon | <i>Hypericum</i> | Flowering plant |
| 494 | Bent, Creeping | <i>Agrostis stolonifera</i> 39 | Grass |
| 623 | Bent giant | <i>Agrostis gigantea</i> | Grass |
| 498 | Brome, Soft | <i>Bromus hordeaceus</i> 269 | Grass |
| 505 | Couch, Common | <i>Elytrigia repens</i> 33 | Grass |
| 516 | Foxtail, Marsh | <i>Alopecurus geniculatus</i> 82 | Grass |
| 533 | Oat-grass, False | <i>Arrhenatherum elatius</i> 169 | Grass |
| 539 | Rye-grass, Perennial | <i>Lolium perenne</i> 1183 | Grass |
| 546 | Yorkshire Fog | <i>Holcus lanatus</i> 983 | Grass |
| 609 | Eurhynchium hians | <i>Eurhynchium hians</i> | Moss |
| 610 | Fissidens bryoides | <i>Fissidens bryoides</i> | Moss |
| 611 | Fissidens taxifolius | <i>Fissidens taxifolius</i> | Moss |
| 612 | Feather moss | <i>Rhyncostegium convertum</i> | Moss |
| 613 | Bryam caespiticium | <i>Bryam caespiticium</i> | Moss |
| 614 | Bryam spp | <i>Bryam spp</i> | Moss |
| 615 | Eurhynchium praelongum | <i>Eurhynchium praelongum</i> | Moss |
| 616 | Brachythecium rutabulum | <i>Brachythecium rutabulum</i> | Moss |
| 617 | Ceratodon purpureus | <i>Ceratodon purpureus</i> | Moss |
| 618 | Amblystegium serpens | <i>Amblystegium serpens</i> | Moss |
| 634 | Centipede brown | <i>Lithobius forficatus</i> | Myriapod |
| 584 | Sedge, False Fox | <i>Carex obtruae</i> 396 | Sedge |
| 586 | Sedge, Remote | <i>Catex remota</i> 412 | Sedge |
| 2 | Ant black | <i>Lasius niger</i> | Insect |
| 627 | Wasp, common | <i>Vespula vulgaris</i> | Insect |
| 628 | Bee, honey | <i>Apis mellifera</i> | Insect |
| 629 | Caddis white | | 0 Insect |
| 630 | Grasshopper brown | <i>Chorthippus brunneus</i> | Insect |
| 635 | Beetle black large | | Insect |
| 558 | Snail, banded | <i>Sepia nemorum</i> | Mollusc |
| 631 | Slug Black | <i>Arion ater</i> | Mollusc |
| 1 | Frog | <i>Rana temporaria</i> | Amphibian |
| 590 | Woodlouse common rough | <i>Porcellio scaber</i> | Crustacean |
| | | | |

POND SAMPLE :

The water is slow moving and the pH is 7.6 as indicated by Phenol Red Indicator and a Lovibond Comparitor.

The sample produced the following 21 species -

| | |
|------------------------------|------------------|
| Culex larva - VR | True Flies |
| Chironomid larva - R | True Flies |
| Caddis larva - VR | Caddis Flies |
| Water Measurer - VR | Water Bugs |
| Water Scorpion - VR | Water Bugs |
| Cyclops - R | Crustacea |
| Dytiscus larva - VR | Beetle |
| Great Diving Beetle - VR | Beetle |
| Lemna minor - D ^R | Duckweed |
| Cladophora - D ^R | Algae |
| Oscillatoria - O | Blue-green Algae |
| Scenedesmus - R | Algae |
| Nitzschia sigmoidea - VR | Diatom |
| Synedra - D | Diatom |
| Cymbella ehrenbergii - C | Diatom |
| Gomphenema - VR | Diatom |
| Pinnularia - VR | Diatom |
| Bursaria - O | Protozoa |
| Amoeba - VR | Protozoa |
| Coleps - O | Protozoa |
| Rotifer sp. - R | Rotifera |

| | | | |
|-------|----------------|---------------------|---------------------|
| KEY : | VR | Very Rare | - only one seen |
| | R | Rare | - two or three seen |
| | O | Ocassional | - about 10 seen |
| | C | Common | - about 20 seen |
| | F | Frequent | |
| | A | Abundant | |
| | VA | Very Abundant | |
| | D | Dominant | |
| | D ^R | Dominant in regions | |

ADDITIONAL SPECIES : As already meantioned, Water Slater (Ascellus), Leeches and a Ramshorn Snail were also found at the water side.
Total species found at the site - 24

Barker's Pond/Our Garden (28-1-07 to 1-11-07)

Fay & John Blackburn

Tufted duck in varying numbers continued to visit the pond throughout the winter months, the last recorded sighting being a solitary male on 16th February, the early departure possibly a result of the milder weather.

A solitary male goosander appeared on the pond on 7th, 11th, 12th, 13th, 14th, 15th, 19th and 20th February. A pair of shoveller were also present on 13th February and we wondered if this might have been the same pair that had been resident on the pond during November 2006. A pair of Canada geese put down briefly on 26th March but were soon put to flight by the resident swans. A common tern was observed indulging in a spot of fishing on 22nd April.

The pair of swans that returned to the pond in December 2006 subsequently produced four young from the five eggs laid. One juvenile was an early fatality due to the adult birds leading their brood on long walkabouts, an unusual practice, we suspect, due to harassment by some faction within the fishing fraternity. By 4th August only one cygnet remained and upon our return from holiday on 11th August only the cob was present on the pond. We have been unable to ascertain the fate of the other two birds.

A female sparrow hawk passed through the garden on 2nd, 5th and 6th February and again on 2nd July.

A small flock of 6-7 sparrows were frequent visitors during January and February but disappeared later in the breeding season and to date there have been only infrequent sightings of individual birds. Is this a result of the activities of the marauding sparrow hawk or other causes currently under investigation nationwide?

Long-tailed tits continue to be regular visitors in varying numbers, notably a flock of ten on 8th February and a further six on 18th February.

A goldcrest was a notable visitor on 16th February.

A pair of bullfinch were observed on the seed feeders on 22nd February. A further sighting of two males on 7th June heralded the start of daily visits mostly by a solitary male feeding on sunflower hearts several times each day, a rewarding spectacle that continued until 21st July when the participants of a fishing contest in close proximity to the bird's flight path to the feeders disturbed its routine and no further sightings were recorded.

Greenfinch appear to have suffered a further decline with a maximum of 3-4 birds daily making visits whilst goldfinch and chaffinch numbers also seem to be much reduced, a possible indication that the earlier recorded virus has returned to affect the finch species.

A mistle thrush appeared in the garden on 10th March and 4th April.

A jackdaw was an unusual first time visitor on 29th April, eating seed that had fallen from one of the feeders. Previously they have only been observed passing over in flight.

A coot and moorhen occupied the garden pool on 11th April. Four juvenile coots were similarly enjoying the facility on 22nd June as were four coots and six mallards on 2nd July. On the downside, a heron has been an all too frequent intruder in the process of decimating our re-stock of varied fish species. This wily bird has defied Fay's anti-heron net draped carefully around the perimeter of the pool and has successfully hopped over it into the shallower area of water. It is totally contemptuous of human presence and flies

away in indifferent fashion when disturbed. It was observed one morning perched precariously on top of the finial on the roof of the summer house.

Early butterfly sightings included a Red Admiral on 3rd and 10th March, a Brimstone on 26th March, a Peacock on 9th and 10th April, an Orange Tip on 10th April, a Speckled Wood on 11th April and a Holly Blue on 14th April. A Gatekeeper and a Holly Blue were on the wing in the garden on 24th July together with an Orange Underwing moth.

Out and About

A cycle ride to Pasture Lane on 3rd February was rewarded with the sight of a green woodpecker, 75 wigeon and six common gulls.

Gardening for Wildlife

BEES : To ensure a supply of nectar from February to autumn, garden beds should include the following plants:

Late winter / early spring

Clematis cirrhosa var. *baliarca*, oriental helibore, pulmonaria, crocus, hyacinth, heathers.

Late spring / early summer

Comfrey, rosemary, lamiums, bluebell, aquilegia, hardy geranium (including *Geranium pratense*), foxglove, cornflower (*Centaurea cyanus*).

Late summer

Sages, thyme, teasel, eryngium, phacelia, lavender, marjoram, verbascum, buddleia, lesser scabious (*Scabiosa columbaria*), mallow (*Malva moschata*), sweetpeas (*Lathyrus grandiflora* and *L. latifolius*), hollyhock.

Early autumn onwards

Aconitum (later varieties *A. carmichaelii*), helenium, sedum, fuchsia, late salvias, perennial helianthus (eg "Lemon Queen"), solidago, single dahlias, Japanese anemones.

Species most commonly found in the garden

The buff-tailed bumble bee (*Bombus terrestris*), the common white-tailed (*Bombus lucorum*) and the common red-tailed (*Bombus lapidarius*). All three like to nest in old mouse nests.

The early bumble bee (*Bombus pratorum*), common pasture (*Bombus pascuorum*) and common garden species (*Bombus hortorum*) prefer to nest in leaf litter or grass tussocks. During spring we discovered such a nest in our leaf mould compost bin.

QUESTIONNAIRE

Please indicate your preference of subject in order to assist in arranging speakers, outings etc.

Indicate 1 for first choice, 2 for second choice etc.

- BIRDS
- WILDFLOWERS
- FUNGI
- MOSSES & LIVERWORTS
- MAMMALS
- REPTILES
- POND LIFE
- INSECTS (including Butterflies, Moths)
- GEOLOGY
- OTHERS - (please specify)

CHOICE OF MEETING NIGHT -

A possible change of meeting has been suggested by some. Please indicate which night is suitable to you by a tick and which are not suitable by X

- MONDAY
- TUESDAY
- WEDNESDAY
- THURSDAY
- FRIDAY

COMMENTS : Please make any comments overleaf.

PERSONAL DETAILS - In order to keep our records up to date, please indicate the following -

NAME

ADDRESS

.....

..... POST CODE

TELEPHONE NUMBER